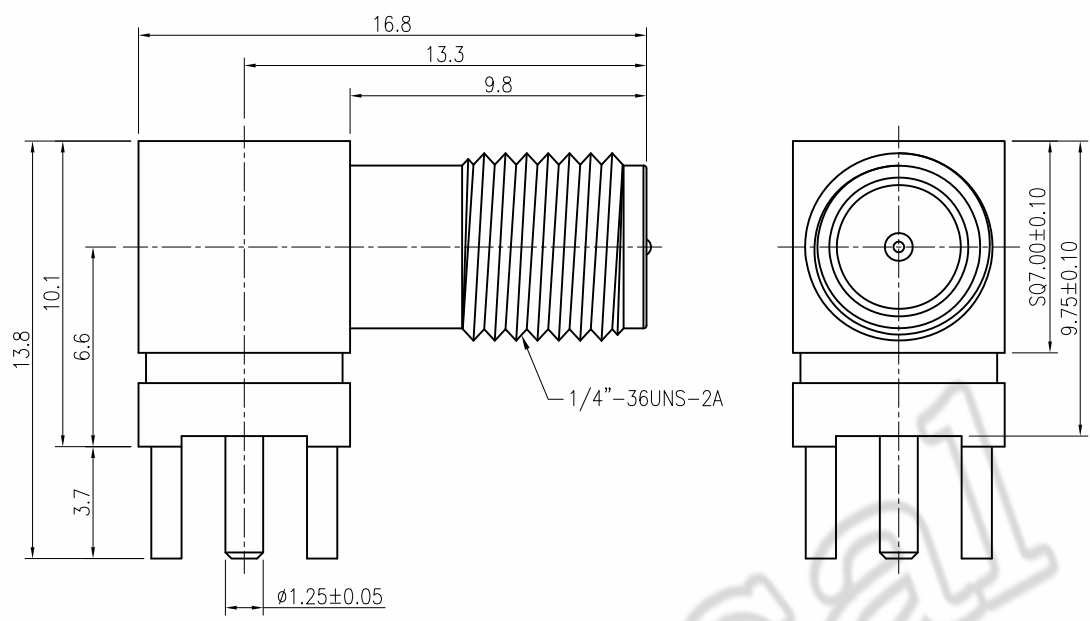
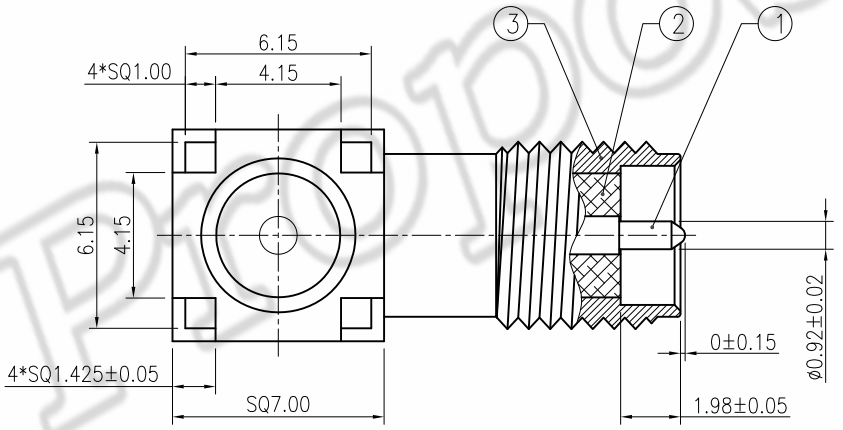
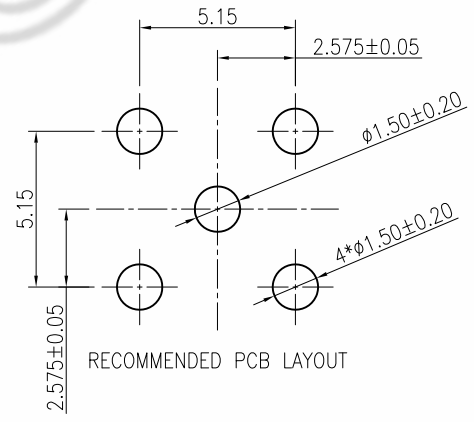


REV.	FILE No.	DRAWN BY	DATE
AO	ECR111013/ECN111023	EDWARD.LIU	2011.10.11



- TECHNICAL SPECIFICATIONS:
- 1.NORMAL IMPEDANCE: 50Ω;
  - 2.FREQUENCY RANGE: DC~12.4GHz;
  - 3.INSERTION LOSS: 0.15dB/6GHz;
  - 4.VSWR: 1.20 Max.;
  - 5.WORKING VOLTAGE: 335V Max.;
  - 6.WITHSTAND VOLTAGE: 1000V Min.;
  - 7.CONTACT RESISTANCE:
    - 7.1.CENTER CONTACT: 3mΩ Max.;
    - 7.2.OUTER CONTACT: 2mΩ Min.;
  - 8.INSULATION RESISTANCE: 5000MΩ Min.;
  - 9.MATING 500 CYCLES Min.;



3	OUTER CONTACT	BRASS,GOLD FLASH,OVER Ni-PLATED 100u"	1	N/A
2	INSULATOR	MATERIAL:PTFE,COLOR:WHITE	1	N/A
1	CENTER CONTACT	BRASS,Au-PLATED 5u",OVER Ni-PLATED 80u"	1	N/A
ITEM	PART NAME	DESCRIPTION	Q'TY	REMARK

DWG TYPE: PART DRAWING		<b>LITE</b> Liteconn Co., Ltd.		
GENERAL TOLERANCE: UNLESS OTHERWISE SPECIFIED			TITLE: RF CONNECTOR ASSEMBLY SMA JACK/REVERSE RIGHT-ANGLE FOR PCB	
X.X ±0.10	X.X' ±2'	APPD:	DWG No.: T431-1115-OR	
X.XX ±0.05	X.XX' ±1'	CHECK:	DATE: 2011.10.11	SCALE: UNIT: 4:1 mm
X.XXX ±0.02	X.XXX' ±0.5'	DRAW: EDWARD.LIU	PAGE: 1/1	

COPIANCE WITH THE REQUIREMENT:  RoHS;  HF;  SONY SS-00259;  OTHER.  
\*NO USING RESTRICTED AND BANNED SUBSTANCE