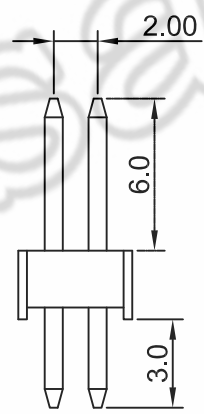
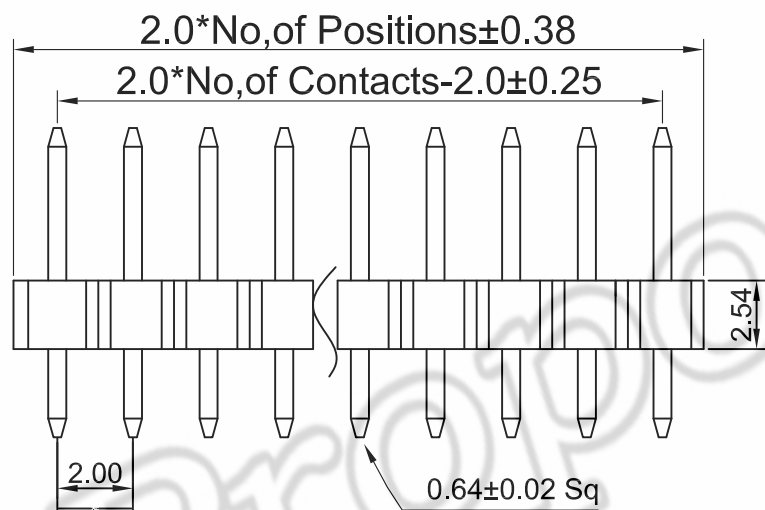
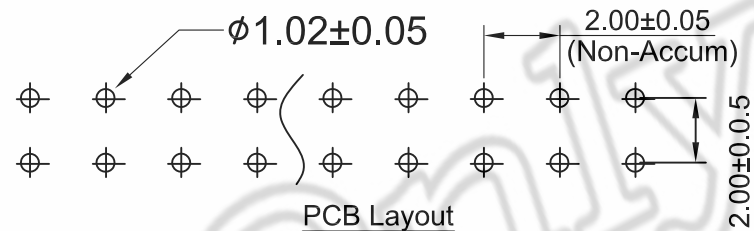
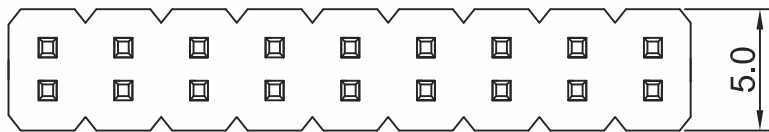


REV	ECN.NO:	BY	DATE
A0	NEW DWG	ZHULIZHI	11.04.07



NOTES:

- MATERIAL:
  - HOUSING: PBT/PA6T
  - CONTACT: BRASS
- FINISH:
  - CONTACT:
    - GOLD PLATING(SEE TABLE) ON CONTACT AREA.
    - 1.27um [50u"] MIN. NICKEL UNDERPLATING OVERALL.
- SPECIFICATIONS:
  - CURRENT RATING :3 AMP
  - INSULATOR RESISTANCE : 1000MΩ MIN
  - DIELECTRIC WITHSTANDING : 600AC/DC
  - OPERATING TEMPERATURE : -40°C TO +105°C
  - CONTACT RESISTANCE : 20mΩ MAX
- FOR WAVE/REFLOW SOLDERING LEAD-FREE PROCESS
- PART NO. : 2121XX-0110- X X X
 

NO.OF PIN	R: ROHS
05: 2*5P	MATERIAL:
06: 2*6P	2. HOUSING: PBT,COLOR: BLACK
07: 2*7P	6. HOUSING: PA6T,COLOR: BLACK
10: 2*10P	PLATING:
20: 2*20P	1. CONTACT: Au 1u";

2	212106-0110-16R	Au1u"	PA6T	BLACK	2*6P	RoHS
1	212120-0110-16R	Au1u"	PA6T	BLACK	2*20P	ROHS
NO:	PART NO:	PLATING	MATERIAL	COLOR	NO.OF PIN	ENVIRONMENTAL

COPLIANCE WITH THE REQUIEMENT  RoHS  HF  SONY00259  OTHER  
 ※ NO USING RESTRICTED AND BANNED SUBSTANCE

CUSTOMER DRAWING		<b>LITE</b> Liteconn Co.,Ltd.						
-TOLERANCES- UNLESS OTHERWISE SPECIFIED		TITLE: PIN HEADER PITCH2.0mm 180°DIP						
X.X	±0.35	X.X*	±3*	APPD:	DWG NO: 212106-0110-XXR			
X.XX	±0.25	X.XX*	±2*	CHECK:	DATE	SCALE	UNIT	PAGE
X.XXX	±0.15	X.XXX*	±1*	DRAW: ZHULIZHI	2011.04.07	1:1	MM	1/1