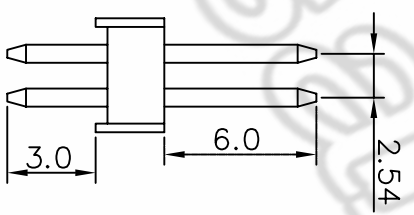
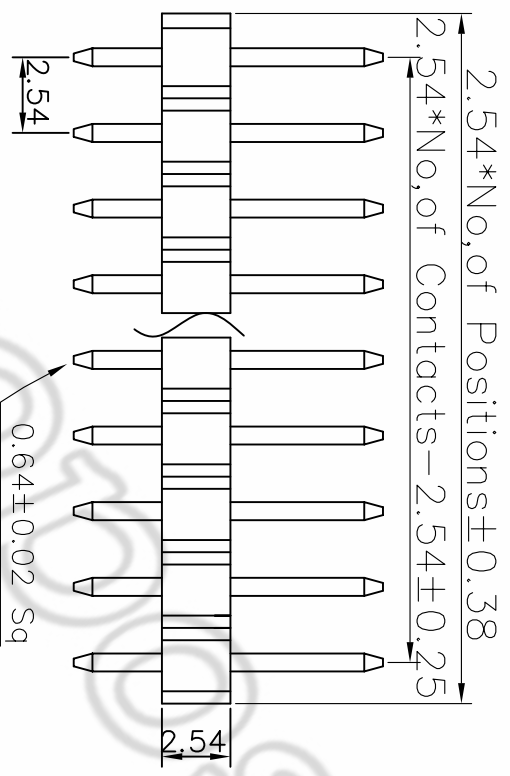
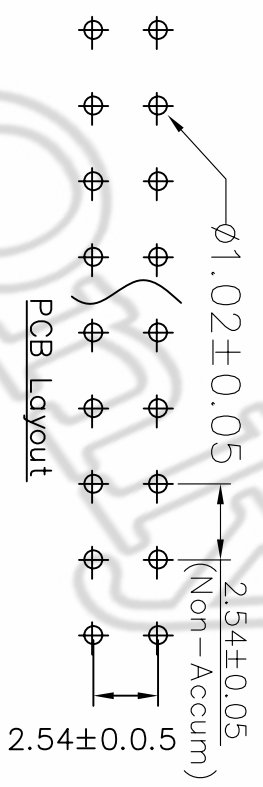
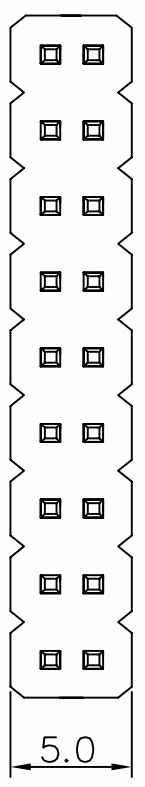


REV	ECONO.:	BY	DATE
A1	NEW DWG	ZHULZHI	11.04.07



6	21110-010-1BR	Au1u"	PA6T	BLACK	2*10P	ROHS
5	21110-010-12R	Au1u"	PBT	BLACK	2*10P	ROHS
4	21107-010-1BR	Au1u"	PA6T	BLACK	2*7P	ROHS
3	21107-010-12R	Au1u"	PBT	BLACK	2*7P	ROHS
2	21105-010-1BR	Au1u"	PA6T	BLACK	2*9P	ROHS
1	21105-010-12R	Au1u"	PBT	BLACK	2*9P	ROHS
NO:	PART NO:	PLATING	MATERIAL	COLOR	NO OF PIN	ENVIRONMENTAL

COMPLIANCE WITH THE REQUIREMENT ROHS HF SON(Y00259) OTHER
 ※ NO USING RESTRICTED AND BANNED SUBSTANCE

- NOTES:
- MATERIAL:
 - 1.1 HOUSING: PBT/PA6T
 - 1.2 CONTACT: BRASS
 - FINISH:
 - 2.1 CONTACT:
 - GOLD PLATING(SEE TABLE) ON CONTACT AREA.
 - 1.27um [50u"] MIN. NICKEL UNDERPLATING OVERALL.

3. SPECIFICATIONS:
- 3.1 CURRENT RATING : 3 AMP
 - 3.2 INSULATOR RESISTANCE : 1000MQ MIN
 - 3.3 DIELECTRIC WITHSTANDING : 600AC/DC
 - 3.4 OPERATING TEMPERATURE : -40C TO +105C
 - 3.5 CONTACT RESISTANCE : 20mΩ MAX
4. FOR WAVE/REFLOW SOLDERING LEAD-FREE PROCESS
5. PART NO. : 2111XX-0110-X X X X
- NO OF PIN
- 05: 2*5P
07: 2*7P
10: 2*10P
- R: ROHS
MATERIAL:
2. HOUSING: PBT/COLOR: BLACK
6. HOUSING: PA6T/COLOR: BLACK
PLATING:
1. CONTACT: Au 1u"

CUSTOMER DRAWING		Lite		TITLE: PIN HEADER PITCH2.54mm 1805IP	
- TOLERANCES - UNLESS OTHERWISE SPECIFIED		APPD:		DWG NO: 2111XX-0110-XXX	
X.X ±0.35	X.X' ±3°	CHECK:		DATE	SCALE
X.XX ±0.25	X.XX' ±2°	DRAW: ZHULZHI		2011.04.07	1:1
X.XXX ±0.15	X.XXX' ±1°			UNIT	PAGE
				MM	1/1